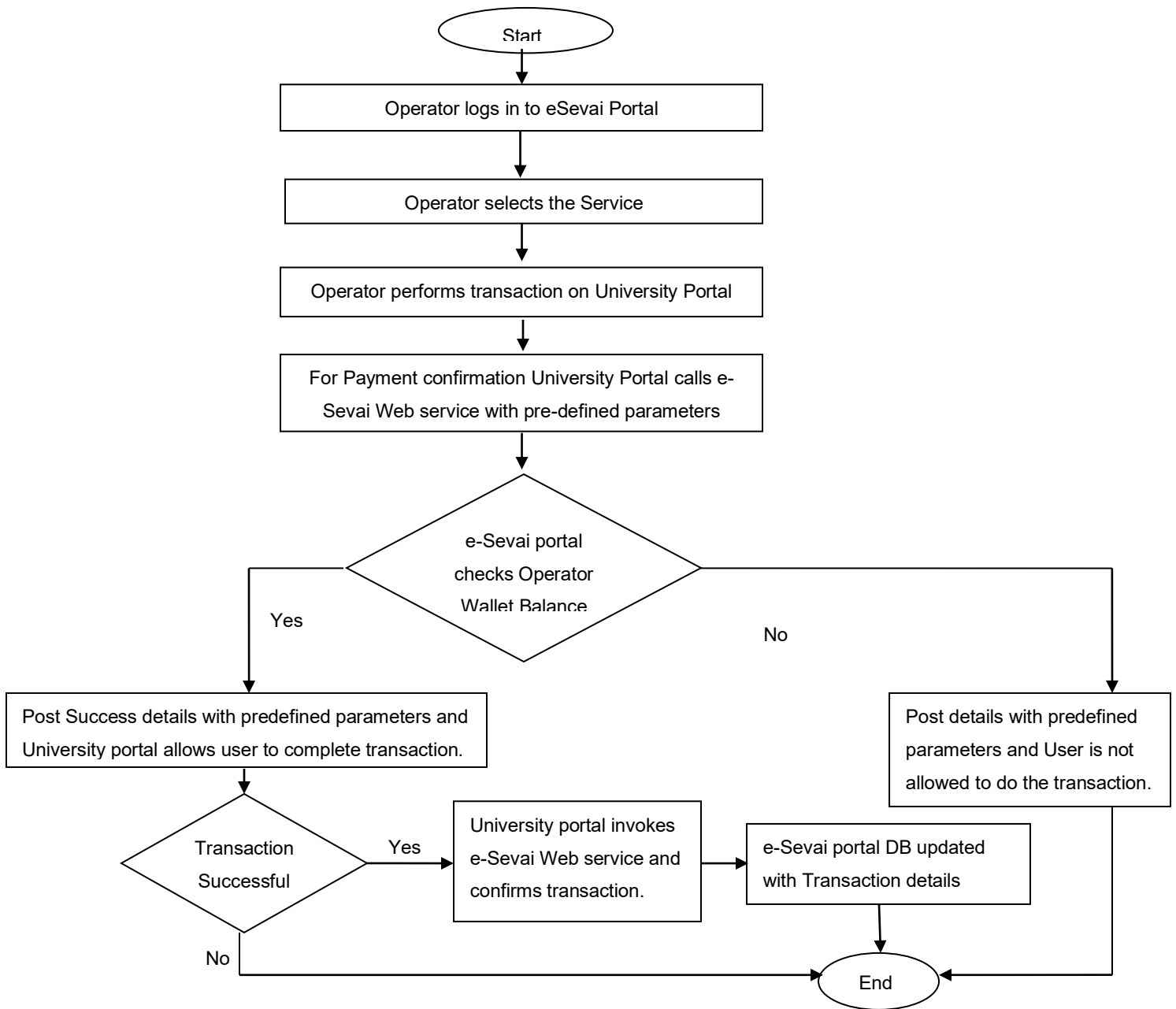


Details for integration with eDistrict Portal



Integration Flow description:

1. Operator login to e-Sevai Portal.
2. Operator selects the Anna University service.
3. Operator does transaction on Anna University Portal.
4. Before transaction is completed, Anna University Portal calls e-Sevai Web Service and posts required parameters (parameter details mentioned below).
5. e-Seva portal check Operator wallet balance(If balance is there then only Operator is authenticated to do a transaction)
6. If Operator is having sufficient balance, e-Sevai will return Success flag ("Y") to Anna University portal else Failure Flag ("N") with reason is returned.
7. Anna University Portal will allow the Operator to complete the transaction only if Success flag is returned by the e-Sevai Web service. In case Failure message is returned then Anna University portal will display proper error message to the Operator.
8. Once transaction is successful at Anna University portal , Anna University portal intimates e-Sevai portal with Anna University transaction id and other required parameters.
9. e-Sevai portal updates its database with transaction details.